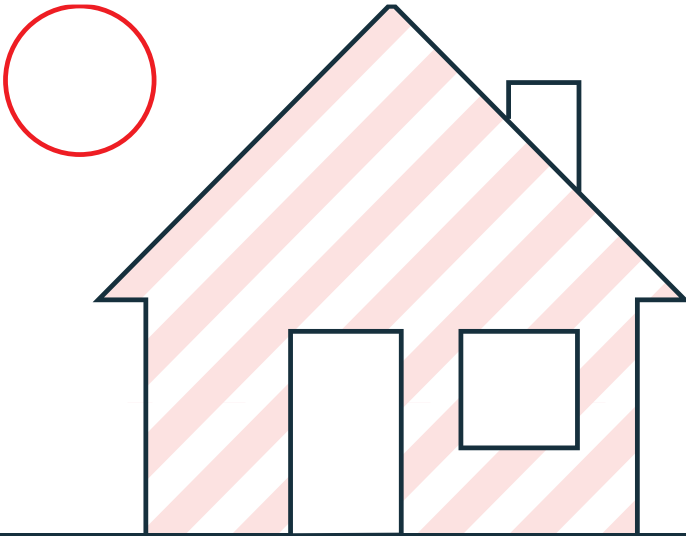


# ***Tipppers***

Helping you understand new changes  
to building regulations **in 2023**

## **PART L FOR EXTENSIONS**



In June 2022, significant revisions to approved documents Part L were released in England. These changes are likely to impact the projects of tradespeople and self-builders, and it is expected that there will be additional updates in the future.

**This guide will advise you on how you can achieve the required U values of Part L building regulations in your extensions and renovation projects.**

Visit your local branch: **[tipppers.com/stores.html](https://www.tipppers.com/stores.html)**

# WALL

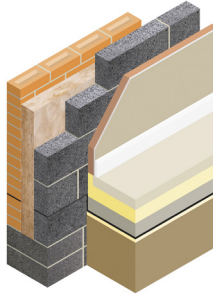
Required U Value **0.18W/m2k or below**

**0.18W/m2k**



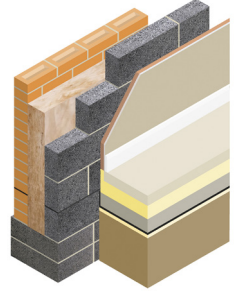
- 100mm Fibolite 3.6N Blocks
- 95mm Cavitytherm
- 5mm Clear Cavity
- 12.5mm Plasterboard on Dabs with Skim

**0.17W/m2k**



- 100mm Fibolite 3.6N Blocks
- 100mm Knauf Dritherm 32
- 53mm Thermaline PIR with Skim

**0.18W/m2k**



- 100mm Fibolite 3.6N Blocks
- 125mm Knauf Dritherm 32
- 35mm Thermaline Plasterboard with Skim

# ROOF

Required U Value **0.15W/m2k or below**



**OPTION 1**

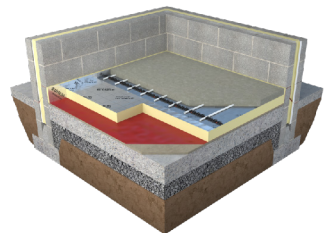
- 2x 100mm Knauf OmniFit Slab 32
- 52.5mm Thin R Thermal Liner Plasterboard

**OPTION 2**

- 150mm PIR Insulation Board
- 12.5mm Plasterboard

# FLOOR

Required U Value **0.18W/m2k or below**



- 150mm Concrete
- 90mm PIR Insulation Board
- 75mm Screed